

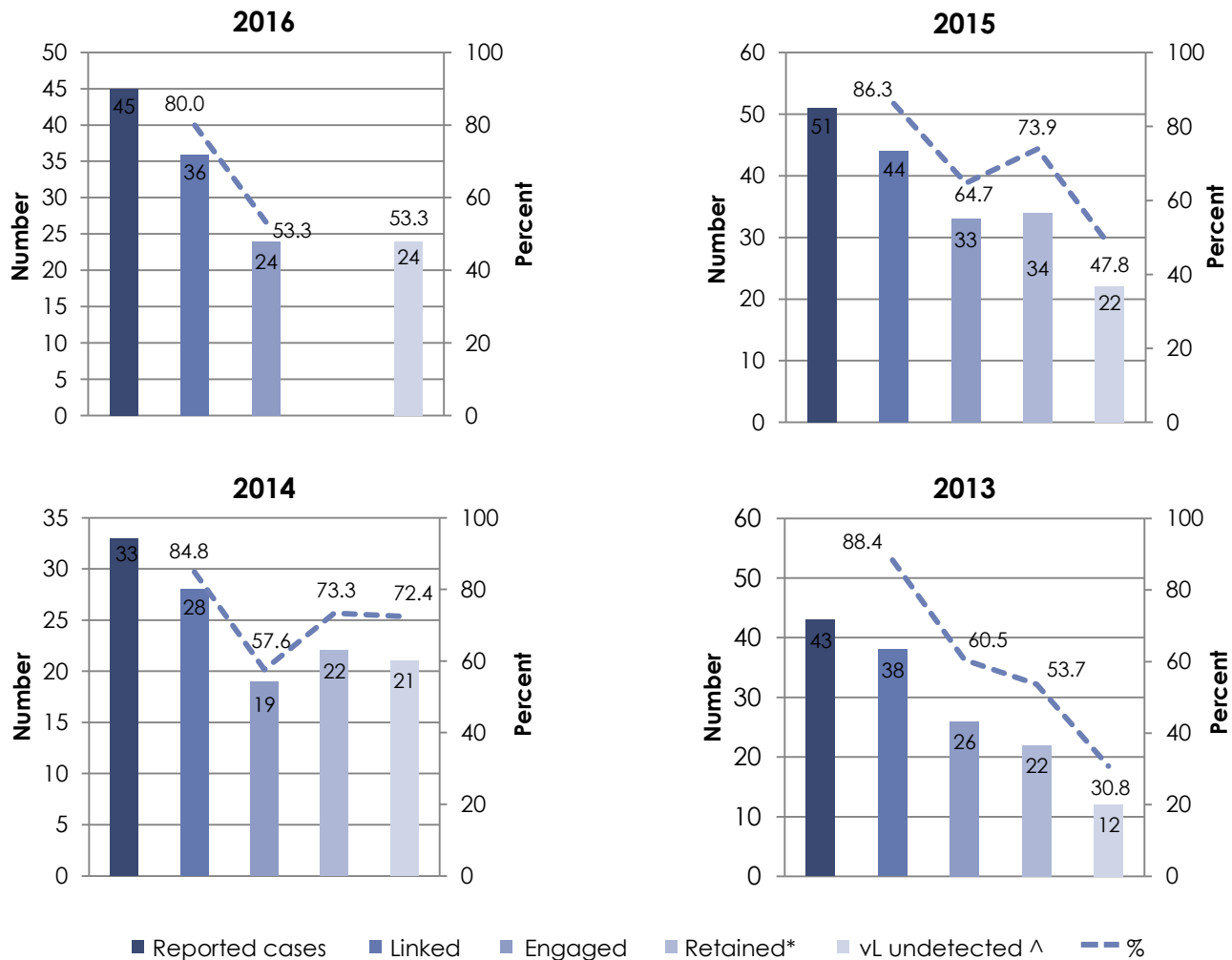
Human Immunodeficiency Virus (HIV)

Care Cascade: Linkage, Engagement and Retention in Care

Highlights

- Linkage to care is a key indicator that measures the beginning of the HIV treatment cascade ([About the Data](#)). Of the 45 persons newly reported in 2016, 80% (36) were linked to care (received medical care through clinic or hospital) within three months of diagnosis (Figure 1). Most of the remainder were linked after three months. Case managers continue to follow up individuals and work to remove barriers to care for 16 months after diagnosis
- Engagement in care (two medical appointments and two repeated blood tests within six months) is also monitored. Of the patients reported in 2016, 53.3% (24) were engaged in care, a decrease in percentage from the past two years (64.7% in 2015 and 57.6% in 2014). The majority of these clients became engaged *after* six months.
- Of the newly reported clients in 2015 (latest available date), 73.9% (34) were retained in care (three medical appointments and two or more repeated blood tests within 16 months of diagnosis). Of those not retained in care, the majority moved out of Region, were lost to follow up, or were deceased.
- See [Front Line - Case Management](#) for the story behind Link, Engage & Retain.

Figure 1: Care Cascade for Newly Reported HIV Positive Individuals by Year of Diagnosis, Saskatoon Health Region, 2013 to 2016

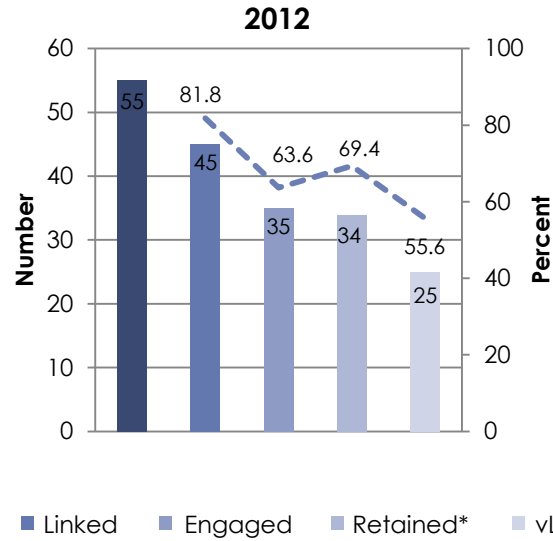


^ latest vL as of November of reported year
 *2016 data for Retained unavailable at time of this report.

Source: Population and Public Health

Human Immunodeficiency Virus (HIV)

Care Cascade: Linkage, Engagement and Retention in Care



Source: Population and Public Health