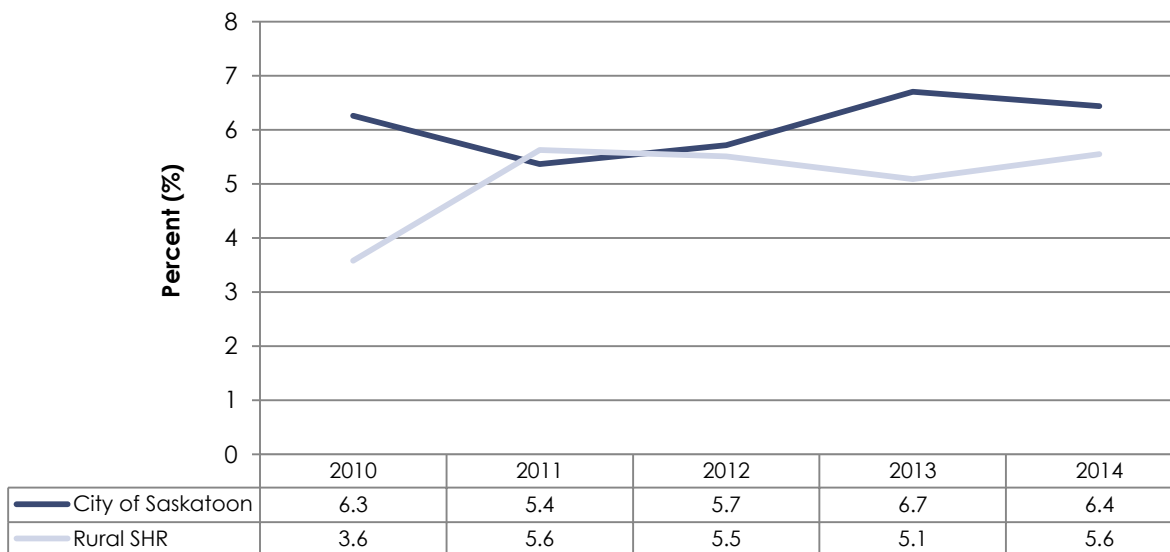


Birth Weight Additional Data

Highlights

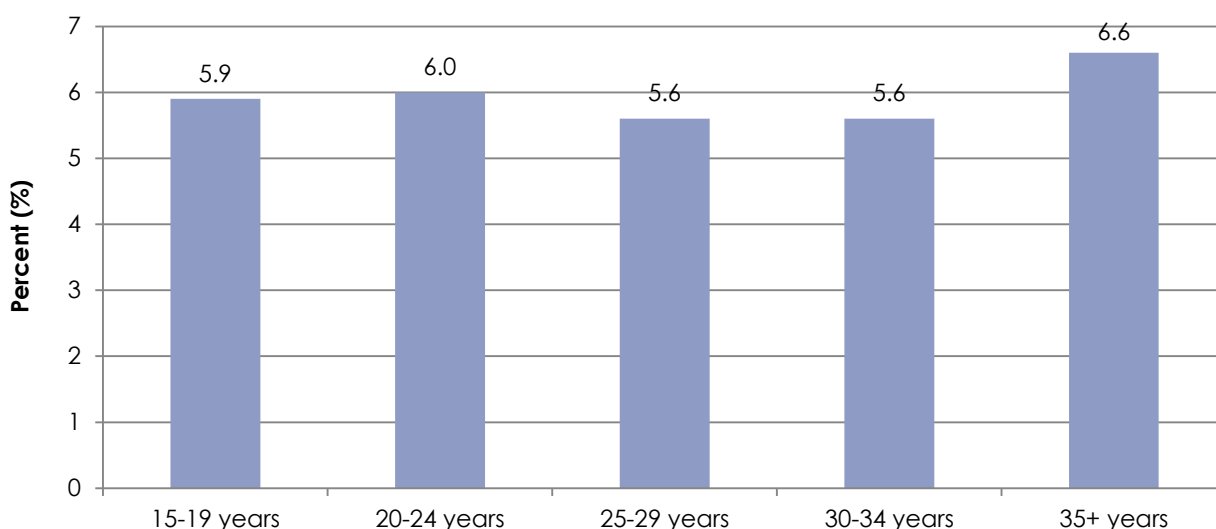
- Mothers living in Saskatoon city experienced higher low birth weight percentages in most years compared to mothers from rural areas of the Region (Figure 1).
- Mothers 35 year of age and older had higher low birth weight percentages than younger mothers for the years 2010 to 2014 combined (Figure 2).
- Mothers living in the least advantaged areas of Saskatoon had higher low birth weight percentages (7.6% in 2010 to 2014 combined) than mothers from other areas (Figure 3).

Figure 1: Low Birth Weight, Saskatoon and Rural Saskatoon Health Region, 2010 to 2014



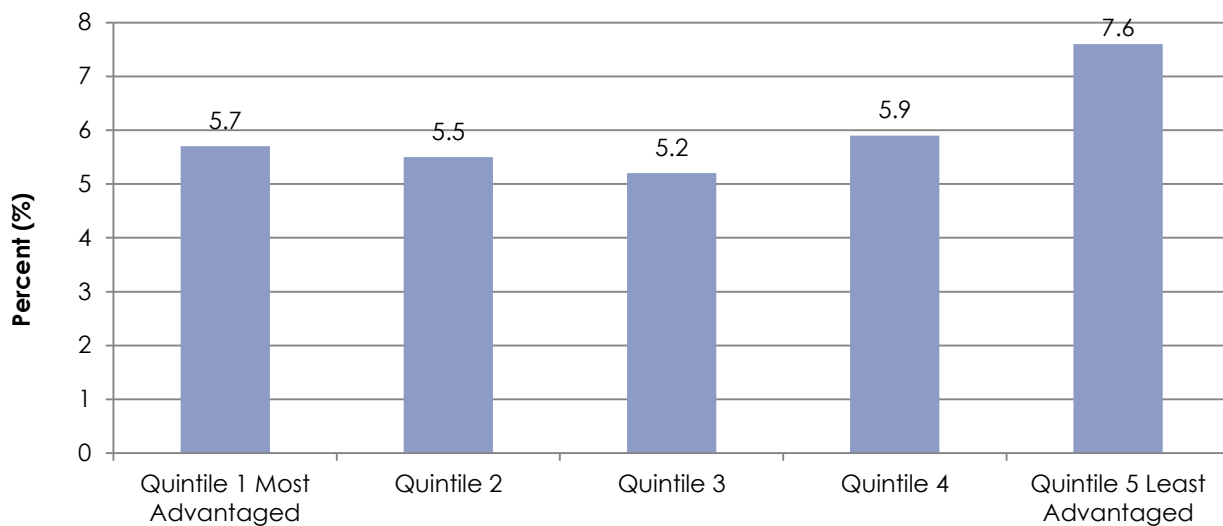
Source: Vital Statistics, eHealth Saskatchewan

Figure 2: Low Birth Weight, Maternal Age, Saskatoon Health Region, 2010 to 2014 Combined



Source: Vital Statistics, eHealth Saskatchewan

Figure 3: Low Birth Weight, Areas of Advantage, Saskatoon, 2010 to 2014 Combined



Source: Vital Statistics, eHealth Saskatchewan