

# Second-Hand Smoke Exposure by Sub-group

## Highlights

- People in the youngest age category (12 to 19 years) were significantly more likely to report second-hand smoke exposure in the home compared to those 60 years and over (10.1% compared to 3.2%) (Table 1)
- Exposure to tobacco smoke in public places has been decreasing in Saskatoon Health Region. Figure 1 shows that the percent of individuals exposed to second-hand smoke in public places has decreased significantly from 2003 (almost 24%) to 2005 (almost 8%) and has stayed stable since then.
- Similarly the percent of individuals exposed to tobacco smoke in vehicles has been steadily decreasing in Saskatoon Health Region. From a high of nearly 10%, the percent of individuals exposed to second-hand smoke in the Region was at 5.1% in 2012. See Figure 2.

**Table 1: Percent of Individuals Regularly Exposed to Tobacco Smoke in the Home, by Sub-group, Saskatoon Health Region, 2008 to 2012**

	Number Exposed to Second-Hand Smoke	Percent Exposed to Second-Hand Smoke	Lower CI	Upper CI
Total Saskatoon Health Region	10,022	4.8	3.5	6.1
<b>Sex</b>				
Male	4,176	4.1	2.6	5.5
Female	5,846	5.5	3.5	7.4
<b>Age Group (Years)</b>				
12-19*	2,909	10.1	6.0	14.2
20-29*	2,107	5.2	2.1	8.2
30-39*	NR	NR	NR	NR
40-49*	NR	NR	NR	NR
50-59	2,655	8.2	3.5	12.9
60+*	1,449	3.2	0.8	1.6
<b>Household Income Level</b>				
Lowest income quintile*	2,149	5.8	2.7	8.9
Second lowest income quintile*	NR	NR	NR	NR
Middle income quintile*	1,740	4.6	1.8	7.4
Second highest income quintile*	2,291	5.7	2.8	8.6
Highest income quintile*	NR	NR	NR	NR
<b>Socio-economic status by deprivation index</b>				
Most Deprived Areas*	NR	NR	NR	NR
Second Most Deprived Areas*	NR	NR	NR	NR
Middle Areas*	NR	NR	NR	NR
Second Least Deprived Areas*	NR	NR	NR	NR
Least Deprived Areas*	NR	NR	NR	NR
<b>Education Level</b>				
Less than high school	2,689	7.0	4.3	9.7
High school graduate*	2,474	6.8	2.6	11.0
Some post-secondary*	NR	NR	NR	NR
Post-secondary graduate	3,638	3.2	1.7	4.8

**Table 1 (continued): Percent of Individuals Regularly Exposed to Tobacco Smoke in the Home, by Sub-group, Saskatoon Health Region, 2008 to 2012**

	Number Exposed to Second-Hand Smoke	Percent Exposed to Second-Hand Smoke	Lower CI	Upper CI
<b>Ethnicity</b>				
White	8,225	4.6	3.2	5.9
Visible Minority*	NR	NR	NR	NR
<b>Immigrant status</b>				
Recent immigrant	NR	NR	NR	NR
Long term immigrant	NR	NR	NR	NR
Non-immigrant	10,022	5.4	4.0	6.9
<b>Geography</b>				
Rural Saskatoon Health Region	1,801	4.2	2.4	6.0
Urban Saskatoon city	8,221	4.9	3.4	6.5
<b>Geography by Rural Planning Zones</b>				
Humboldt and Area*	NR	NR	NR	NR
Rosthern and Area	NR	NR	NR	NR
Watrous and Area*	NR	NR	NR	NR
Saskatoon Area*	NR	NR	NR	NR

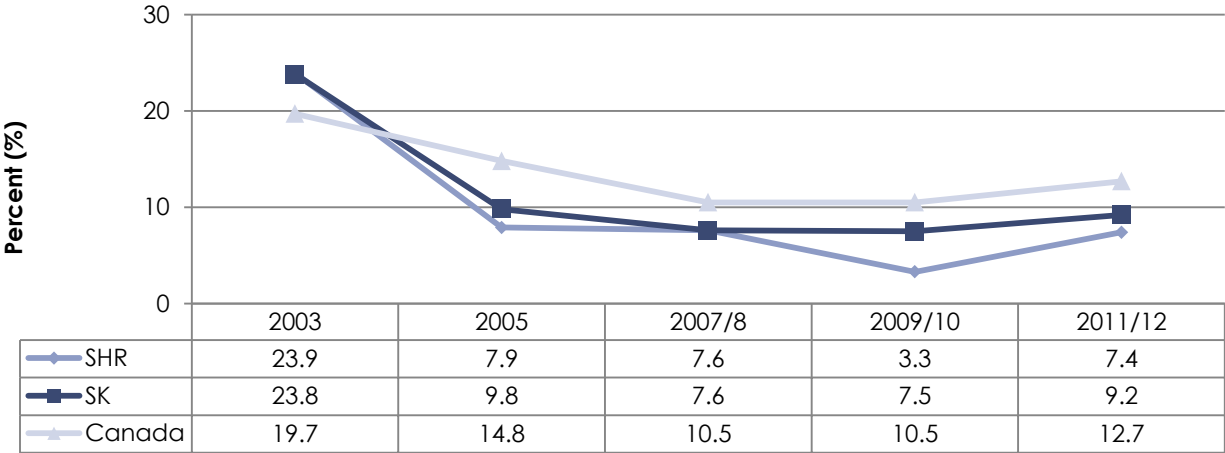
\* Use estimate with caution, high sampling variability.

NR=not reportable due to low sample size.

All estimates are weighted to the Saskatoon Health Region population.

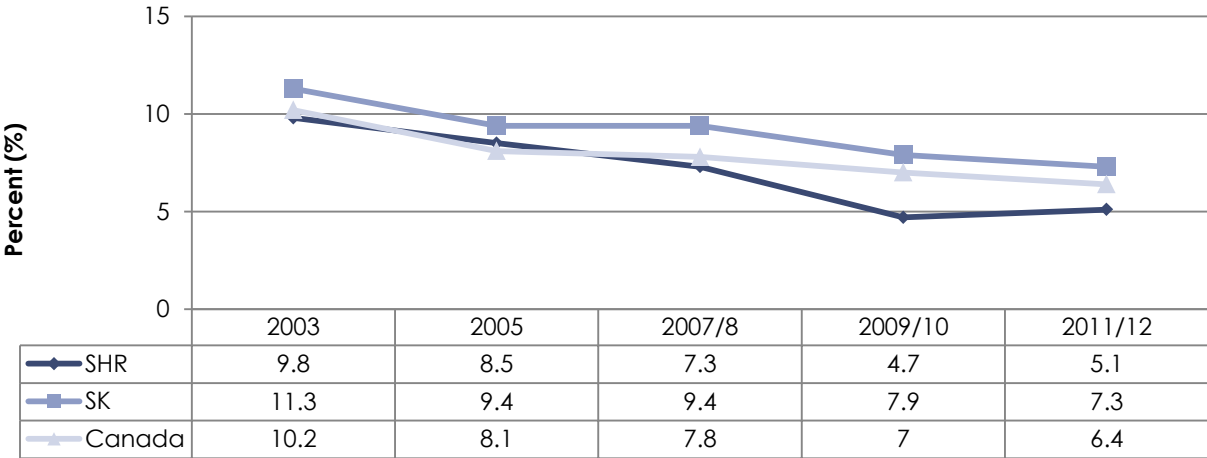
This study was conducted, in part, with data provided by the Saskatchewan Ministry of Health to the Health Quality Council. The interpretations and conclusions herein do not necessarily represent those of the Saskatchewan Ministry of Health or Government of Saskatchewan. The analyses are based on data from Statistics Canada and the opinions expressed do not represent the views of Statistics Canada.

**Figure 1: Percent of Individuals Regularly Exposed to Second-hand Smoke in Public Places, Saskatoon Health Region, Saskatchewan, and Canada 2003 to 2012**



Source: Statistics Canada

**Figure 2: Percent of Individuals Regularly Exposed to Second-hand Smoke in Private Vehicles, Saskatoon Health Region, Saskatchewan, and Canada 2003 to 2012**



Source: Statistics Canada